



CHARLES UNIVERSITY First Faculty of Medicine

Prof. MUDr. Karel Smetana, DrSc.

Průmyslová 595
252 50 Vestec

phone: +420 325 873 021 | +420 224 965 873

karel.smetana@lf1.cuni.cz

<http://biocev.lf1.cuni.cz>

SMETANA LAB



BIOCEV

Biotechnology and Biomedicine Centre of the Academy
of Sciences and Charles University in Vestec

EXPERTISE

Advanced tissue cultures
Immunocytochemistry

CONTRACT RESEARCH

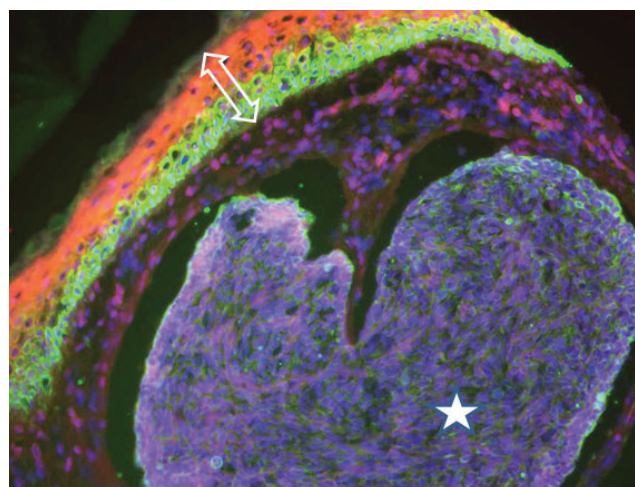
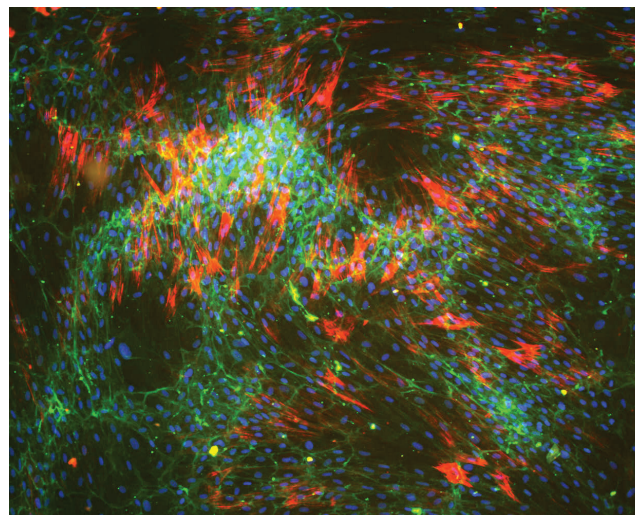
Cell cultivation
Detection of molecules using histochemical methods
Functional evaluation of cells
Tissue engineering

PROJECTS

- Microenvironment of malignant melanoma as a factor of tumor aggressiveness. GAČR 16-05534S
- Tumor microenvironment of head and neck carcinoma: Prognostic significance of extracellular matrix produced by tumor-associated fibroblasts. AZV 15-28933A
- Cellular and molecular characteristics of neonatal human skin: consequences for skin healing. GAČR 13-20293S

PARTNERS

General Faculty Hospital, Prague
Institute of Molecular Genetics of the ASCR, v.v.i, Prague



[HTTP://BIOCEV.LF1.CUNI.CZ](http://biocev.lf1.cuni.cz)